



## 2 bed apartment to buy in SL6

Cookham Road, Maidenhead, SL6 7HR

**£145,000** Starting Bid

 x2  x1  x1

Tenure

**Leasehold**

## Property features

- ✓ Being Sold via Secure Sale online bidding. Terms and Conditions
- ✓ Separate kitchen
- ✓ Two double bedrooms
- ✓ Family bathroom
- ✓ EPC Rating C

## Key Information

- ✓ Council Tax: Band B
- ✓ EPC Rating: C
- ✓ Heating supply: Gas
- ✓ Electric supply: National Grid
- ✓ Water supply: Direct mains water
- ✓ Broadband: FTTP (fibre to the premises)
- ✓ Mobile signal: Good

## Description

An ample two bedroom apartment situated in the north town area. The property is located 0.9 miles from Maidenhead town centre & railway station (crossrail). An opportunity for investors.

Council Tax Band: B

Tenure: Leasehold

Length of Lease: 80

Annual Ground Rent Amount: £15.00

Service Charge Review Period: no service charge

Price: Starting Bid £145,000

Property Type: Apartment

Parking: None

Construction materials: Brick and block

Roofing type: Slate tiles

Heating: Gas

Electric: National Grid

Water: Direct mains water

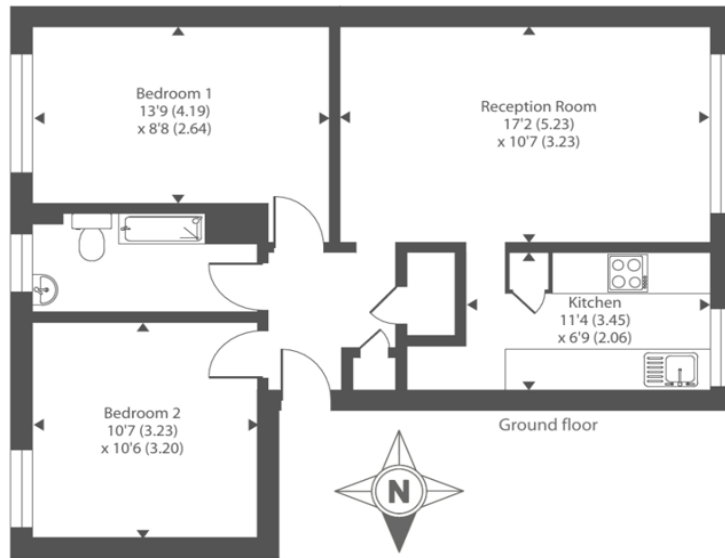
Water meter: Yes

Sewerage: Standard UK domestic

Air conditioning: No

Broadband: FTTP (fibre to the premises)

Mobile signal coverage: Good



Floor plan produced in accordance with RICS Property Measurement Standards incorporating International Property Measurement Standards (IPMS2 Residential). © rihcom 2024. Produced for Chancellors Estate Agents. REF: 1172977

Energy Efficiency Rating		Current	Potential
<i>Very energy efficient - lower running costs</i>			
(92-100) <b>A</b>			
(81-91) <b>B</b>			
(69-80) <b>C</b>		75	79
(55-68) <b>D</b>			
(39-54) <b>E</b>			
(21-38) <b>F</b>			
(1-20) <b>G</b>			
<i>Not energy efficient - higher running costs</i>			
<b>England, Scotland &amp; Wales</b>		EU Directive 2002/91/EC	

Cookham Road, Maidenhead, SL6 7HR

Contact your local branch today for more information on this property:

**1000 Great West Road, Brentford, Brentford, Middlesex, TW8 9DW, Tel: 0208 106 8888,**

**<https://openhouse.london/>**

These particulars, whilst believed to be accurate are set out as a general outline only for guidance and do not constitute any part of an offer or contract. Intending purchasers should not rely on them as statements of representation of fact, but must satisfy themselves by inspection or otherwise as to their accuracy. No person in this firm's employment has the authority to make or give any representation or warranty in respect of the property.

