



3 bed terraced house to buy in

Clement Road, Halesowen, West
Midlands, B62 9LR

£120,000 Starting Bid

 x3  x1  x1

Tenure

Freehold

Allocated parking

Property features

 EPC Rating D

Key Information

- ✓ Council Tax: Band A
- ✓ EPC Rating: D
- ✓ Heating supply: Air Source Heat Pump
- ✓ Electric supply: National Grid
- ✓ Water supply: Direct mains water
- ✓ Mobile signal: Good

Description

Pattinson Auction bring to market this three bedroom terraced house on Clement Road, situated in Halesowen.

The property also comprises of a reception room, kitchen and a bathroom and presents an excellent investment opportunity.

Council Tax Band: A

Tenure: Freehold

Price: Starting Bid £120,000

Property Type: Terraced House

Parking: Allocated

Construction materials: Brick and block

Roofing type: Slate tiles

Risk of floods and or erosion: No

Flooded in last 5 years: No

Flood defences: No

Planning permissions or proposals for development: No

Coalfield or mining area: No

Listed property: No

Conservation area: No

Public rights of way: No

Adaptions for accessibility: No

Restrictions: No

Required access: No

Heating: Air Source Heat Pump

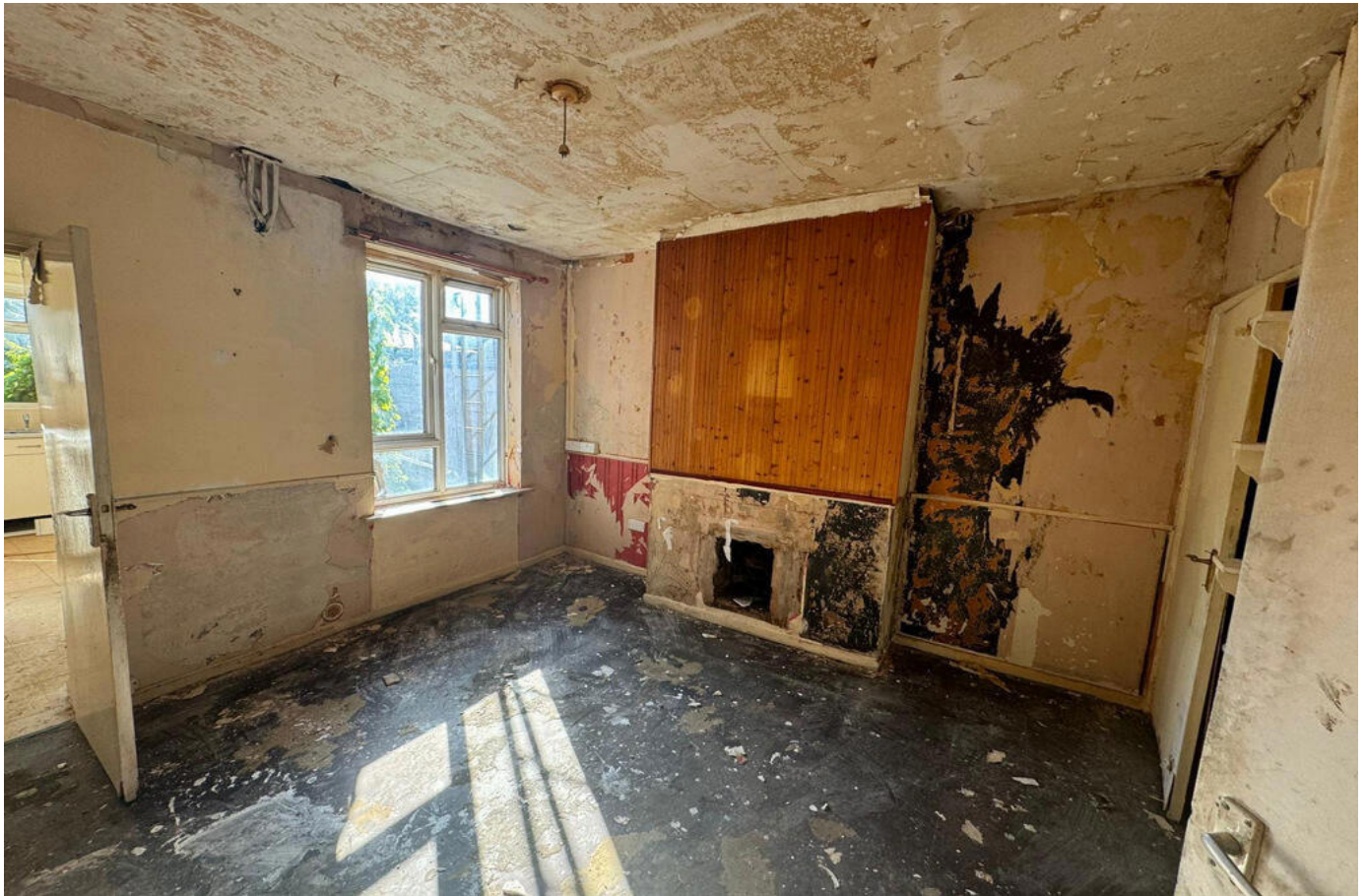
Electric: National Grid


Water: Direct mains water

Sewerage: Standard UK domestic

Air conditioning: No

Mobile signal coverage: Good



Energy Efficiency Rating		
	Current	Potential
<i>Very energy efficient - lower running costs</i>		
(92-100) A		
(81-91) B		82
(69-80) C		
(55-68) D	60	
(39-54) E		
(21-38) F		
(1-20) G		
<i>Not energy efficient - higher running costs</i>		
England, Scotland & Wales		EU Directive 2002/91/EC 

Clement Road, Halesowen, West Midlands, B62 9LR

Contact your local branch today for more information on this property:

**1000 Great West Road, Brentford, Brentford, Middlesex, TW8 9DW, Tel: 0208 106 8888,
<https://openhouse.london/>**

These particulars, whilst believed to be accurate are set out as a general outline only for guidance and do not constitute any part of an offer or contract. Intending purchasers should not rely on them as statements of representation of fact, but must satisfy themselves by inspection or otherwise as to their accuracy. No person in this firm's employment has the authority to make or give any representation or warranty in respect of the property.

