



3 bed semi-detached house to buy in TS20

Hury Road, Norton, Stockton-on-Tees, Durham, TS20 1DD

£110,000

🏠 x3 🚗 x1 🚗 x1

Tenure

Freehold

Driveway & Garage parking

Property features

- ✓ SELLING WITH NO ONWARD
- ✓ TWO RECEPTION ROOMS
- ✓ THREE BEDROOMS
- ✓ GARDENS TO THREE SIDES
- ✓ EPC Rating D

Key Information

- ✓ Council Tax: Band A
- ✓ EPC Rating: D
- ✓ Heating supply: Gas

Description

Ideal First Home, Family Move or Investment Opportunity

Pattinson are delighted to welcome to the market this three-bedroom semi-detached home, pleasantly positioned within a popular and well-established residential area. Conveniently located for local amenities, transport links and well-regarded schools, the property offers excellent potential for a range of buyers.

Requiring modernisation throughout, this home presents a superb opportunity for first-time buyers looking to put their own stamp on a property, families seeking a project, or investors aiming to add value to their portfolio.

The ground floor accommodation briefly comprises an entrance hallway with staircase to the first floor and useful under-stairs storage. The bay-fronted lounge opens through to a dining area overlooking the rear garden, providing flexible living and entertaining space.

To the first floor, a bright landing gives access to three well-proportioned bedrooms, all capable of accommodating a double bed. The family bathroom is fitted with a white suite and is complemented by a separate W.C.

Externally, the property benefits from a garden to the front and gardens are to the side and rear, offering ample outdoor space with scope for improvement and a garage rebuild.

A fantastic opportunity to acquire a spacious home with huge potential in a sought-after location. Early viewing is strongly recommended to appreciate the possibilities on offer. Contact the Norton Branch today to arrange your viewing.

Council Tax Band: A

Tenure: Freehold

Price: £110,000

Property Type: Semi-detached house

Parking: Driveway & Garage

Heating: Gas

Accommodation

Dining Room

3.65m x 2.94m (11'11" x 9'7")



Living Room

3.86m x 3.65m (12'7" x 11'11")



Kitchen

3.38m x 2.43m (11'1" x 7'11")



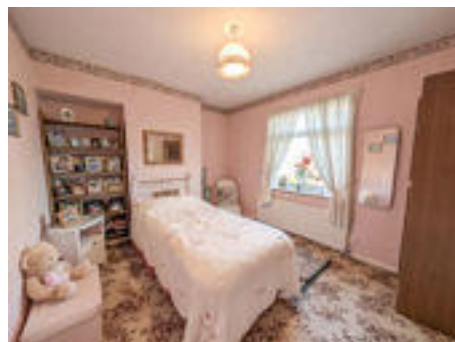
Bedroom 1

3.86m x 3.35m (12'7" x 10'11")



Bedroom 2

3.65m x 2.94m (11'11" x 9'7")

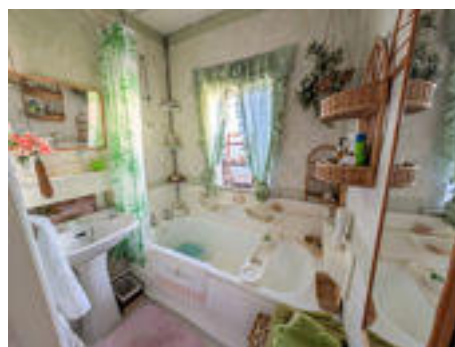


Bedroom 3

2.75m x 2.71m (9'0" x 8'10")

Bathroom

1.75m x 1.38m (5'8" x 4'6")



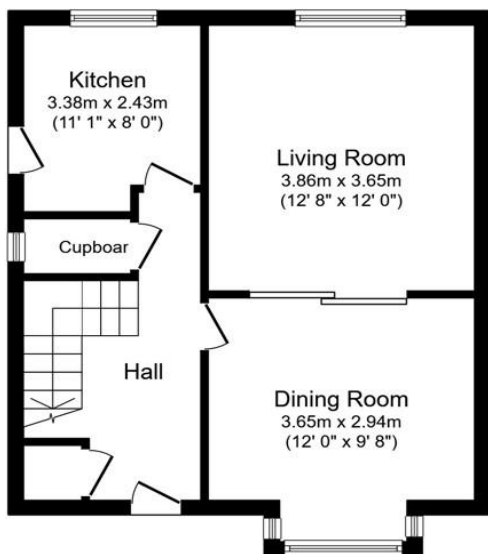
Gardens



Garden

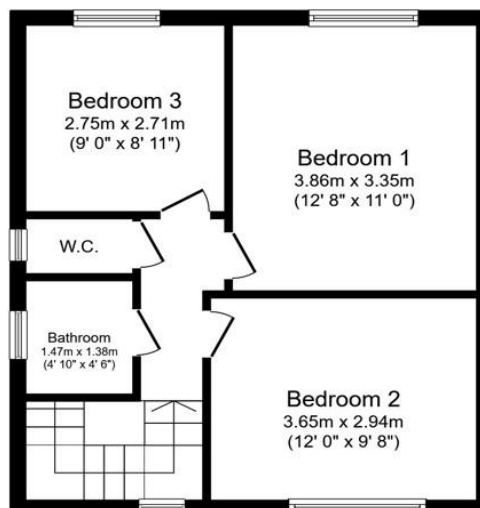


1 Hury Road, Norton, TS20 1DD



Ground Floor

Floor area 43.7 sq.m. (470 sq.ft.)

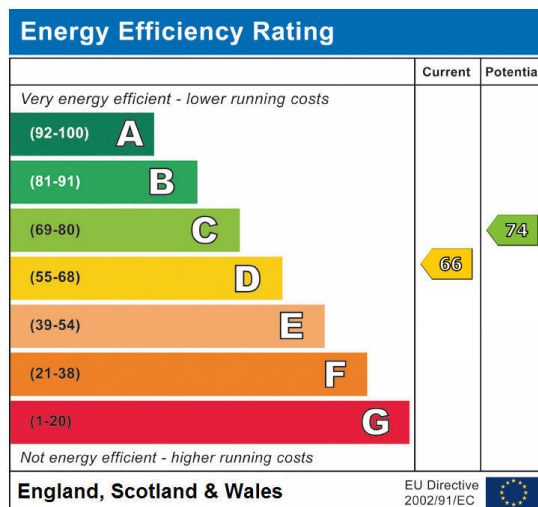


First Floor

Floor area 42.6 sq.m. (459 sq.ft.)

Total floor area: 86.3 sq.m. (929 sq.ft.)

This floor plan is for illustrative purposes only. It is not drawn to scale. Any measurements, floor areas (including any total floor area), openings and orientations are approximate. No details are guaranteed, they cannot be relied upon for any purpose and do not form any part of any agreement. No liability is taken for any error, omission or misstatement. A party must rely upon its own inspection(s). Powered by www.Propertybox.io



Hury Road, Norton, Stockton-on-Tees, Durham, TS20 1DD

Contact your local branch today for more information on this property:

1000 Great West Road, Brentford, Brentford, Middlesex, TW8 9DW, Tel: 0208 106 8888,

<https://openhouse.london/>

These particulars, whilst believed to be accurate are set out as a general outline only for guidance and do not constitute any part of an offer or contract. Intending purchasers should not rely on them as statements of representation of fact, but must satisfy themselves by inspection or otherwise as to their accuracy. No person in this firm's employment has the authority to make or give any representation or warranty in respect of the property.

