

richard
james

2 bed semi-detached house to buy in SN4

Morstone Road, Royal Wootton Bassett, Swindon, Wiltshire, SN4 7DH

£165,000 Starting Bid

 x2  x1  x2

Tenure

Freehold

Driveway parking

Property features

- ✓ BEING SOLD VIA SECURE SALE ONLINE BIDDING - T&Cs APPLY
- ✓ Two Double Bedrooms
- ✓ Large Driveway
- ✓ Potential To Extend (STPP)
- ✓ EPC Rating D

Key Information

- ✓ Council Tax: Band C
- ✓ EPC Rating: D
- ✓ Heating supply: Gas
- ✓ Electric supply: National Grid
- ✓ Water supply: Direct mains water
- ✓ Broadband: FTTP (fibre to the premises)
- ✓ Mobile signal: Good

Description

Sold via Secure Sale online bidding. Terms & Conditions apply. Starting Bid £165,000

A mature semi-detached house with a well-sized, south-west facing garden, situated in an established residential cul-de-sac within walking distance of the main High Street. Offered with no onward chain and owned by the same vendors since 1955, this property presents a rare opportunity with huge potential for extension or development (subject to planning permission).

The accommodation includes an entrance porch, a spacious open-plan lounge/dining room, a kitchen with pantry, and a lean-to/conservatory with a downstairs cloakroom. Upstairs features two generous double bedrooms and a refitted modern family bathroom.

Outside, the block-paved driveway provides parking for several vehicles, with gated access leading to a generous, south-west facing rear garden, mainly laid to lawn with a patio area—perfect for enjoying afternoon and evening sun.

While some cosmetic updating may be required, the property already benefits from double glazing and a gas boiler. A fantastic opportunity to modernise and extend in a desirable location.

Council Tax Band: C

Tenure: Freehold

Price: Starting Bid £165,000

Property Type: Semi-detached house

Parking: Driveway

Construction materials: Brick and block

Roofing type: Clay tiles

Risk of floods and or erosion: No

Flooded in last 5 years: No

Flood defences: No

Planning permissions or proposals for development: No

Coalfield or mining area: No

Listed property: No

Conservation area: No

Public rights of way: No

Adaptions for accessibility: No

Restrictions: No

Required access: No

Heating: Gas

Electric: National Grid

Water: Direct mains water

Water meter: No

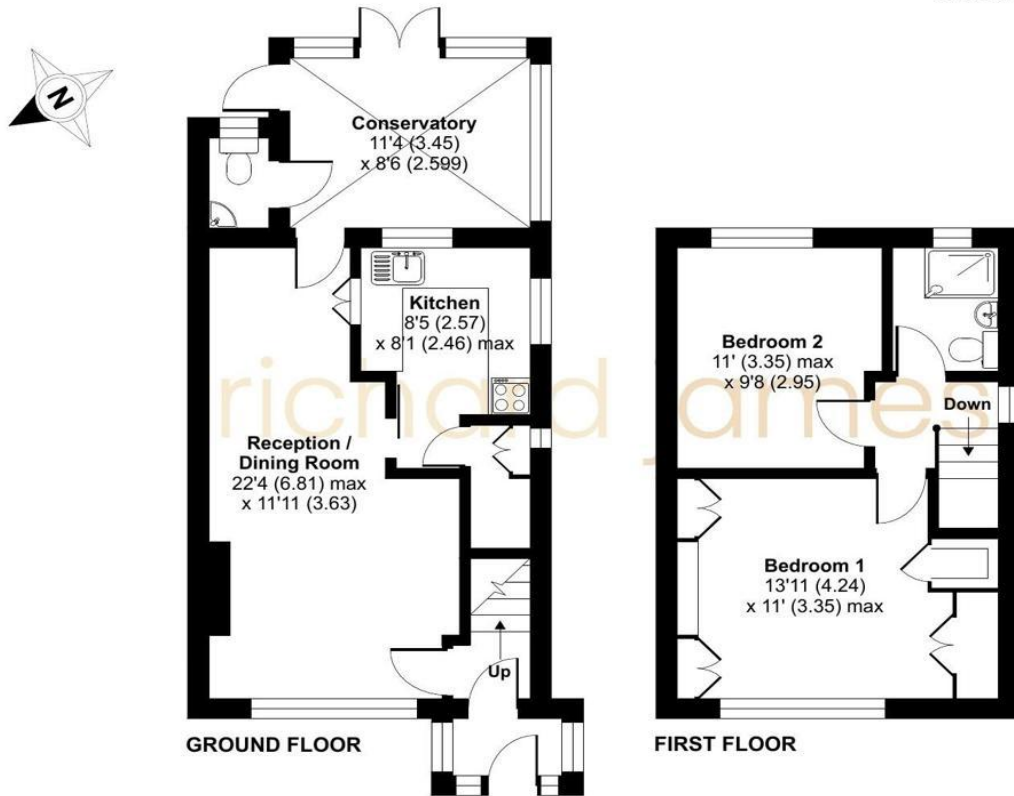
Sewerage: Standard UK domestic

Air conditioning: No

Broadband: FTTP (fibre to the premises)

Mobile signal coverage: Good

Approximate Area = 829 sq ft / 77 sq m
For identification only - Not to scale



Floor plan produced in accordance with RICS Property Measurement 2nd Edition, Incorporating International Property Measurement Standards (IPMS2 Residential). © nrichcom 2025. Produced for Richard James Estate Agents Ltd. REF: 1332355

Energy Efficiency Rating		Current	Potential
Very energy efficient - lower running costs			
(92-100) A			
(81-91) B			
(69-80) C			75
(55-68) D		63	
(39-54) E			
(21-38) F			
(1-20) G			
Not energy efficient - higher running costs			
England, Scotland & Wales		EU Directive 2002/91/EC	

Morstone Road, Royal Wootton Bassett, Swindon, Wiltshire, SN4 7DH

Contact your local branch today for more information on this property:

1000 Great West Road, Brentford, Brentford, Middlesex, TW8 9DW, Tel: 0208 106 8888,
<https://openhouse.london/>

These particulars, whilst believed to be accurate are set out as a general outline only for guidance and do not constitute any part of an offer or contract. Intending purchasers should not rely on them as statements of representation of fact, but must satisfy themselves by inspection or otherwise as to their accuracy. No person in this firm's employment has the authority to make or give any representation or warranty in respect of the property.

