



## 4 bed town house to buy in TS17

Easdale Court, Thornaby,  
Stockton-on-Tees, Durham, TS17 9BW

# £155,000

🏠 x4 🚗 x2 🚲 x1

Tenure

**Freehold**

Driveway & Garage parking

## Property features

- ✓ No Forward Chain
- ✓ Master Ensuite and Down Stairs
- ✓ Integral garage
- ✓ Close to Local Amenities and Transport Links
- ✓ EPC Rating C

## Key Information

- ✓ Council Tax: Band C
- ✓ EPC Rating: C
- ✓ Heating supply: Gas

## Description

Situated within the popular Easdale Court development in Thornaby, this spacious four-bedroom terraced townhouse offers versatile living accommodation set across three floors, making it an ideal purchase for families and first-time buyers alike. Conveniently located close to local amenities, schools, transport links and commuter routes, the property combines modern living with practicality.

The accommodation briefly comprises an entrance hallway, ground floor W/C, and a modern kitchen/dining area providing the perfect space for everyday family life and entertaining. To the first floor is a generous lounge along with the master bedroom benefitting from its own ensuite shower room. The second floor offers a further three well-proportioned bedrooms together with a family bathroom.

Externally, the property benefits from a driveway providing off-street parking, as well as an integral garage. Early viewing is highly recommended to fully appreciate the size and layout of accommodation on offer.

Council Tax Band: C

Tenure: Freehold

Price: £155,000

Property Type: Town House

Parking: Driveway & Garage

Heating: Gas

## Entrance



## W/C



## Kitchen/Dining Area

4.36m x 3.74m (14'3" x 12'3")



## Stairs to First Floor

## Lounge

4.44m x 3.58m (14'6" x 11'8")



## Master Bedroom

5.35m x 3.77m (17'6" x 12'4")



## En-Suite



---

## Stairs to Second Floor

## Bedroom Two

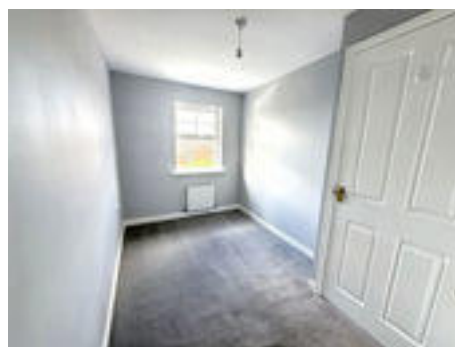
*4.48m x 2.76m (14'8" x 9'0")*

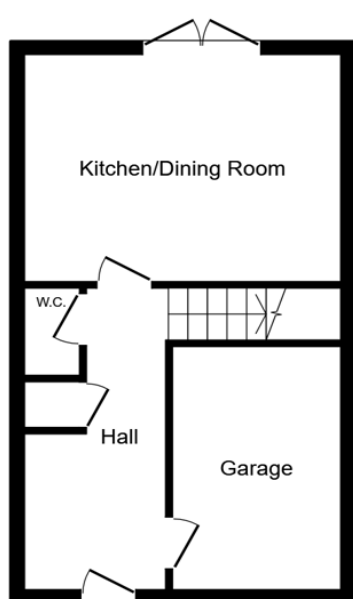


---

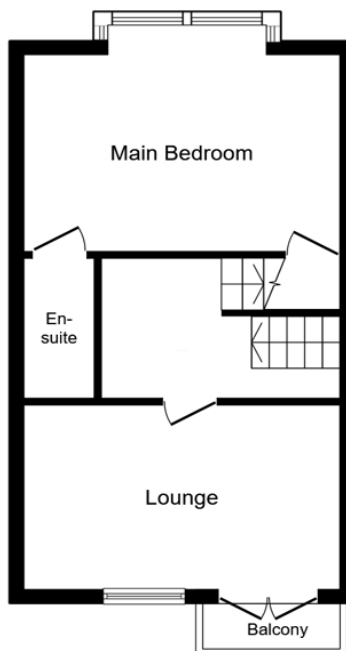
## Bedroom Three

*2.59m x 1.59m (8'5" x 5'2")*

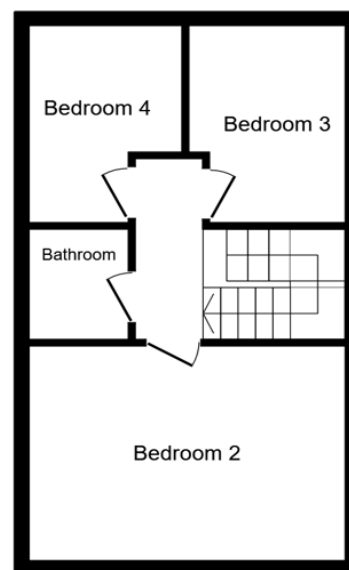




Ground Floor




First Floor



Second Floor

This floor plan is for illustrative purposes only. It is not drawn to scale. Any measurements, floor areas (including any total floor area), openings and orientations are approximate. No details are guaranteed, they cannot be relied upon for any purpose and do not form any part of any agreement. No liability is taken for any error, omission or misstatement. A party must rely upon its own inspection(s). Powered by www.Propertybox.io

Energy Efficiency Rating		Current	Potential
<i>Very energy efficient - lower running costs</i>			
(92-100) <b>A</b>			
(81-91) <b>B</b>			
(69-80) <b>C</b>		78	82
(55-68) <b>D</b>			
(39-54) <b>E</b>			
(21-38) <b>F</b>			
(1-20) <b>G</b>			
<i>Not energy efficient - higher running costs</i>			
<b>England, Scotland &amp; Wales</b>		EU Directive 2002/91/EC 	

Easdale Court, Thornaby, Stockton-on-Tees, Durham, TS17 9BW

Contact your local branch today for more information on this property:

**1000 Great West Road, Brentford, Brentford, Middlesex, TW8 9DW, Tel: 0208 106 8888,**

**<https://openhouse.london/>**

These particulars, whilst believed to be accurate are set out as a general outline only for guidance and do not constitute any part of an offer or contract. Intending purchasers should not rely on them as statements of representation of fact, but must satisfy themselves by inspection or otherwise as to their accuracy. No person in this firm's employment has the authority to make or give any representation or warranty in respect of the property.

